

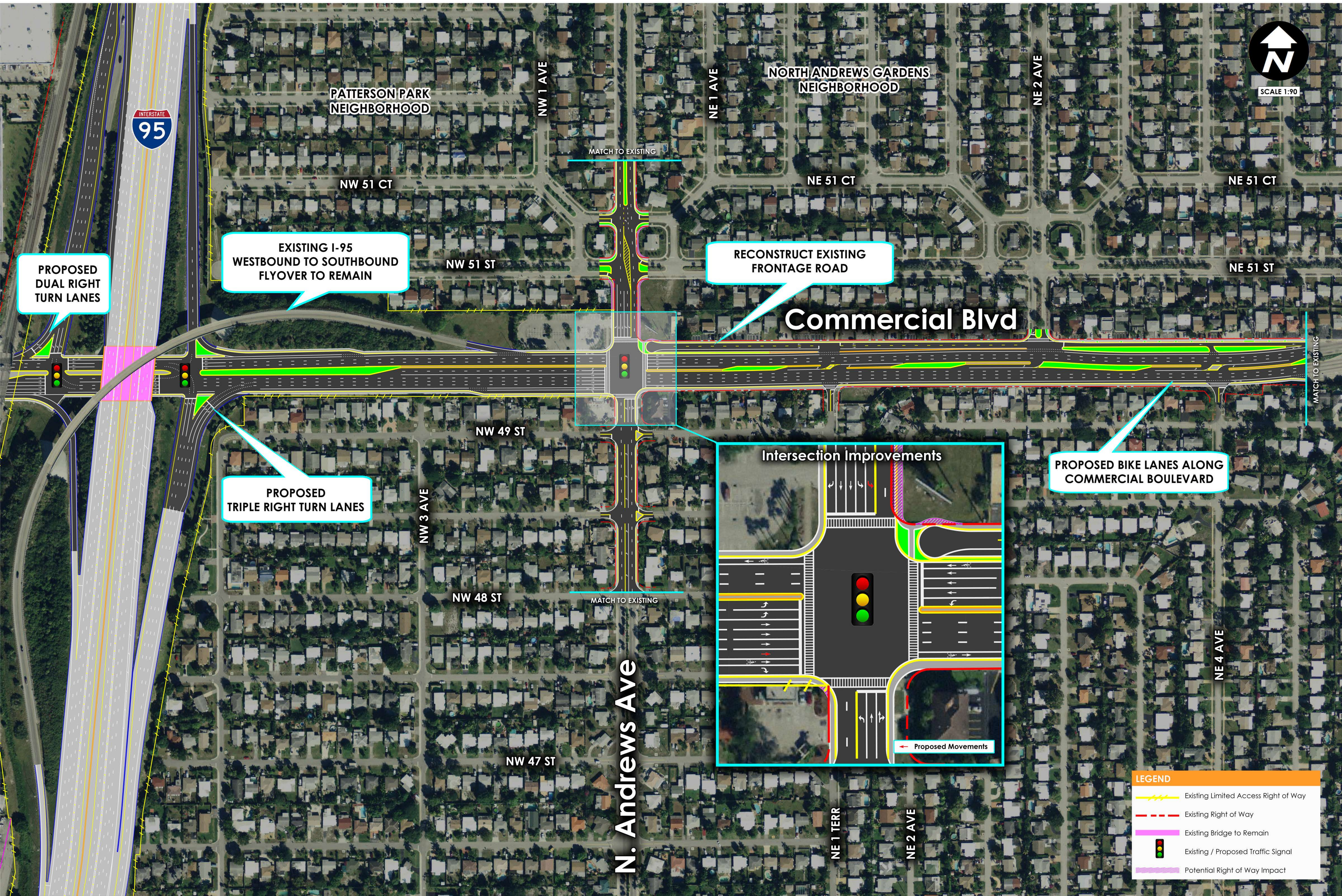
# COMMERCIAL BOULEVARD & N. ANDREWS AVENUE INTERSECTION: ALTERNATIVE 1

PD&E STUDY  
 SR 9/1-95 FROM SOUTH OF SR 870/COMMERCIAL BOULEVARD  
 TO NORTH OF CYPRESS CREEK ROAD  
 FM# 435808-1-22-02 / ETDM 14222

SHERATON SUITES FORT LAUDERDALE  
 ALTERNATIVES PUBLIC WORKSHOP • June 29, 2017



SCALE 1:90



LEGEND	
	Existing Limited Access Right of Way
	Existing Right of Way
	Existing Bridge to Remain
	Existing / Proposed Traffic Signal
	Potential Right of Way Impact